



Opening New Horizons in Interior Design & Common Applications

Dividers • Wall Covers • Bathrooms & Showers • Kitchens • Balustrades & Balconies • Art & Cultural
Canopies • Stained Glass • Signage & Memorial • Lighting • Table tops • Doors & Windows



Design Freedom and Functionality Control

The latest innovations in glass printing technology open new opportunities to combine boundless creativity with highly controlled functionality. Full expression of vision and outstanding budget-smart performance delivery are now possible with digital ceramic in-glass printing.

- **Easy implementation**

Of any pattern or design, with unlimited colors, and high resolution for fine details.

- **Durability and accuracy**

Inks are fused into the glass, providing unmatched resistance to scratching, acid, UV light and weather. Precise micro-drop printing allows accurate photorealistic and graphic designs.

- **A new medium for expression**

The ability to combine transparent, translucent and opaque details in any way, full freedom in colors and shades, and the possibility to create double-vision designs for different front and back experiences, are moving glass printing into the realm of tools for design.

Outstanding Functional Performance

Dip-Tech's solution for digital ceramic in-glass printing meets complex functional performance requirements. It enables control of all special elements of architectural and designed glass:

- **Translucency/opacity**

- **Light diffusion and transmission**

- **Energy efficiency**

- **Privacy levels**

- **Slip resistance**

New Era Technology

In Digital Ceramic In-Glass Printing

Sustainable Architecture

Dip-Tech's printed glass meets environmentally responsible architecture goals:

- The glass is recyclable and offers eco-friendly functionality.
 - Using this technology can assist with LEED and other environmental certification.
 - The printed glass contains no toxic heavy metals.
 - Printing a new design on glass panels is well-suited to urban renewal projects where redesigning only parts of buildings is preferable to demolition and rebuilding.
 - Over time, if elements need to be replaced or added, individual glass panels can be printed and perfectly matched to the existing panels, eliminating the cost and waste of more extensive refurbishment.
-

Budget-Smart Design

From the initial design stage, through the value engineering process, Dip-Tech assists architects, designers and consultants with calculating the long-term savings enabled by digital ceramic printed glass. If needed, Dip-Tech helps evaluate alternative ways of using digital in-glass printing, so that printed glass elements can be kept in a project, even as budgets change over time.



DIVIDERS

SODA STREAM LABORATORY

📍 Airport-City, Israel

🏢 Phoenicia Industries





DIVIDERS

MERIDIAN BUSINESS CENTER

📍 St. Petersburg, Russia



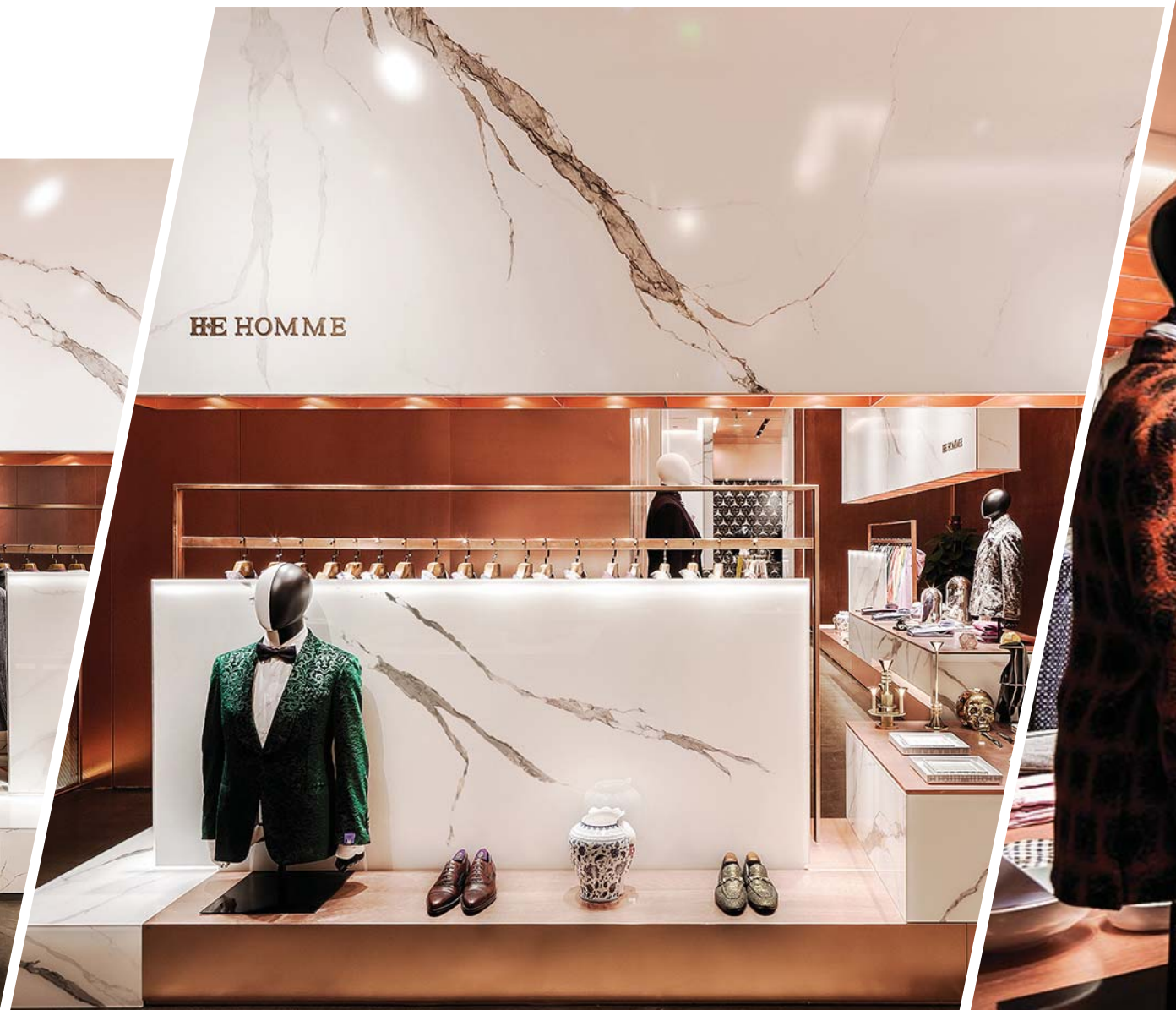


WALL COVERS

HE HOMME

📍 Shen Zhen, China

🏠 POBO Glass





WALL COVERS

INTERIOR RESIDENTIAL APARTMENTS

📍 St. Petersburg, Russia

RSK





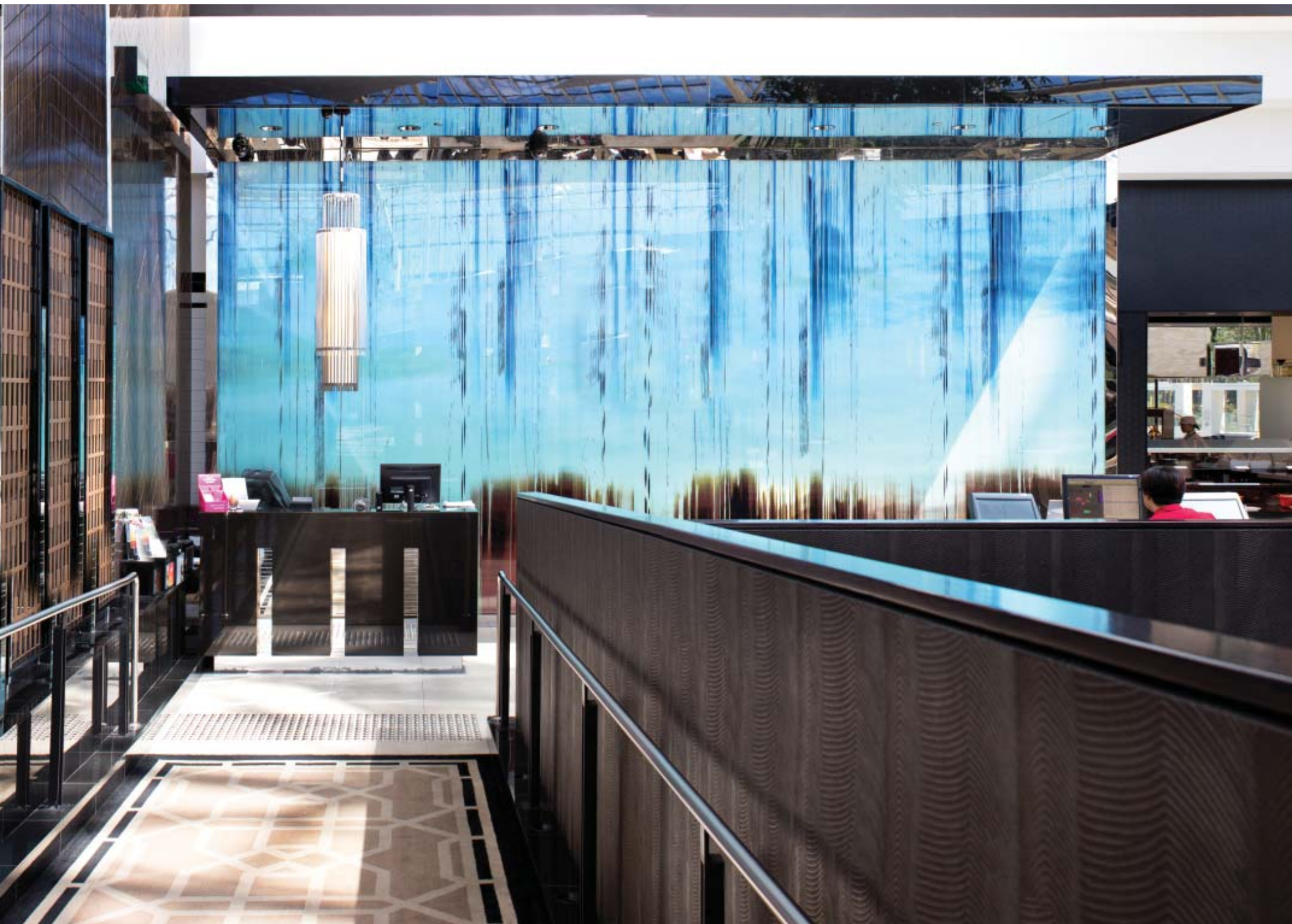
WALL COVERS

CROWN METROPOL HOTEL

📍 Burswood, Western Australia

🏢 Cooling Brothers



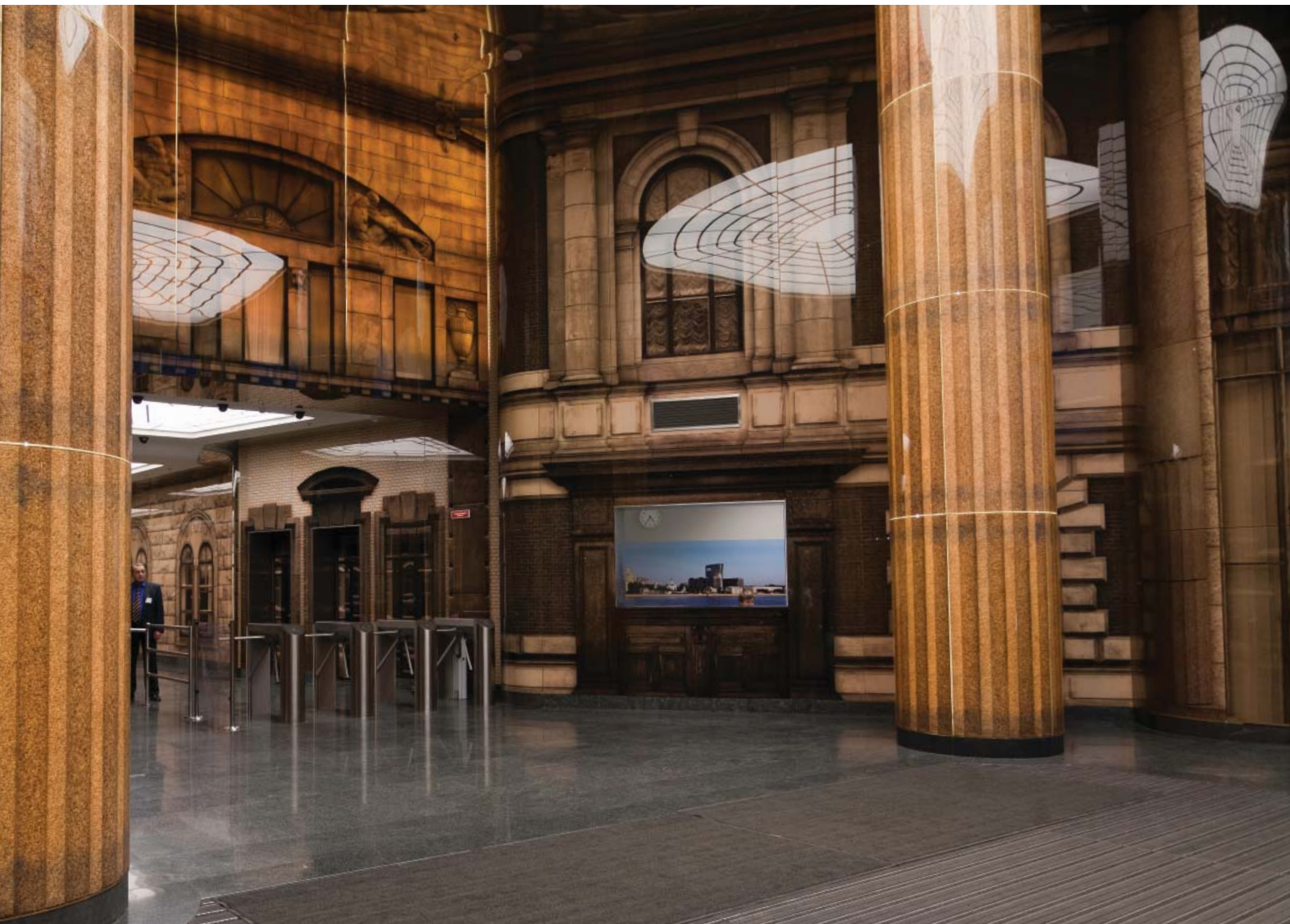


WALL COVERS

BANK OF ST. PETERSBURG

📍 St. Petersburg, Russia



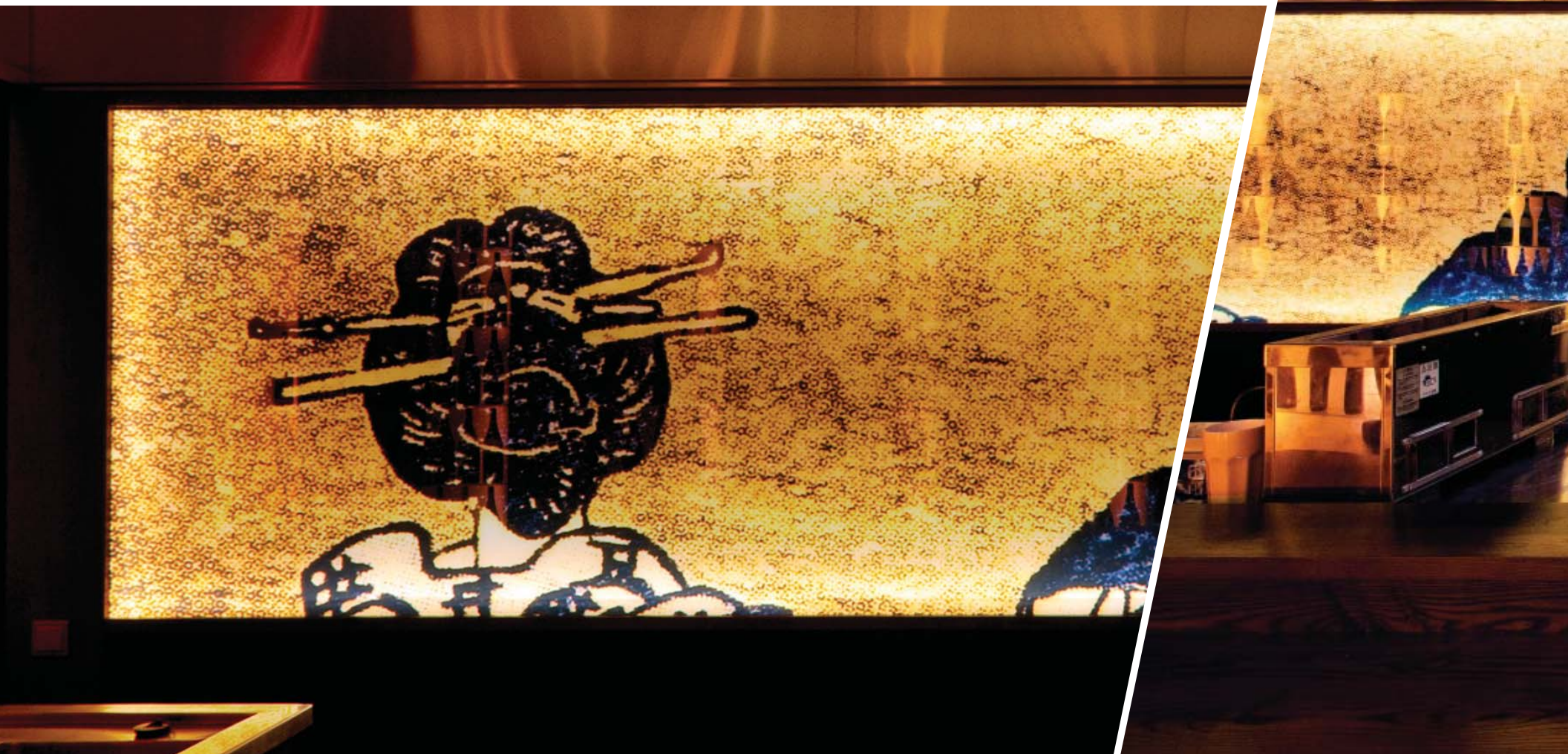


WALL COVERS

FUKU RESTAURANT

📍 Perth, Australia

🏠 Cooling Brothers



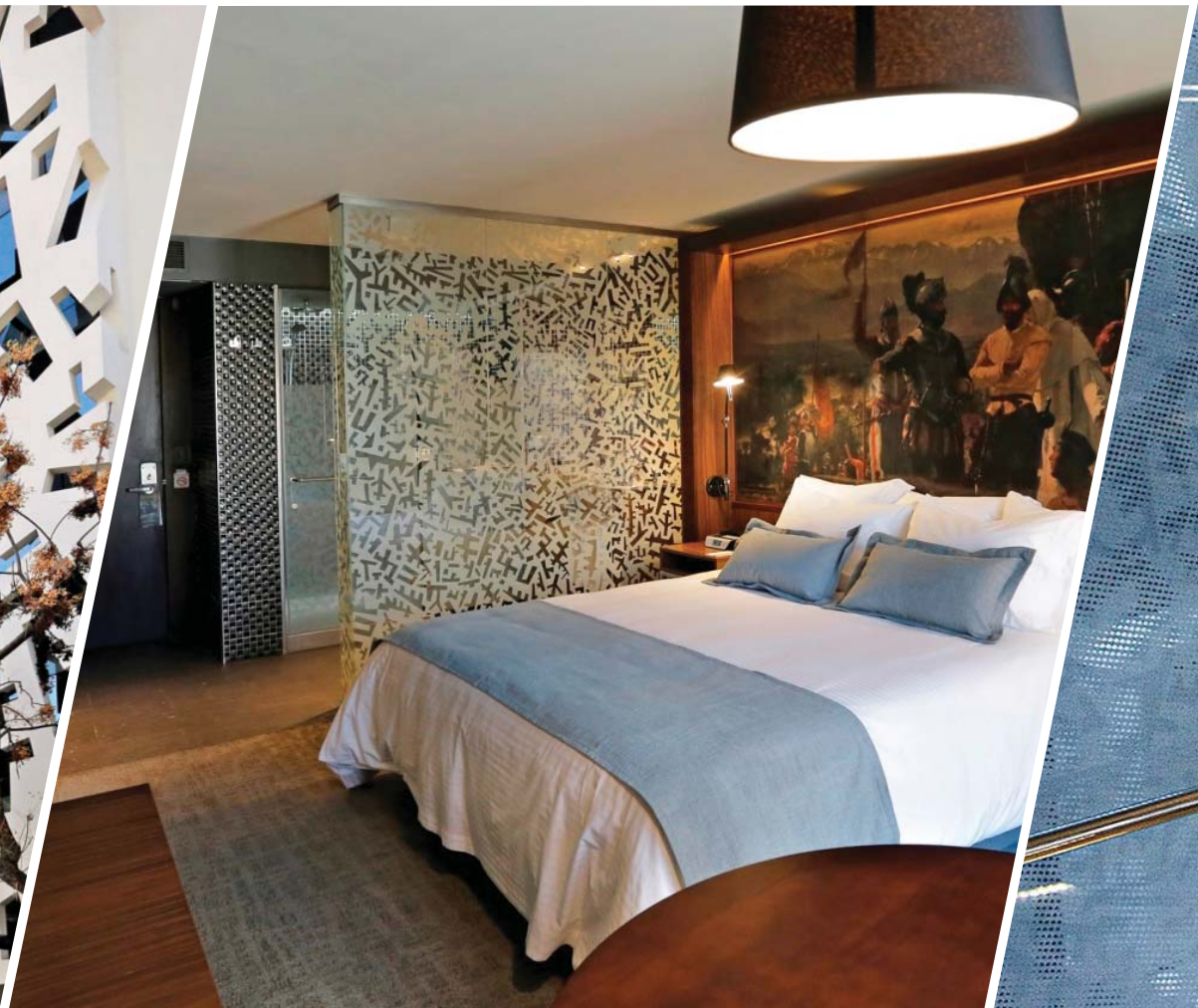


BATHROOMS & SHOWERS

CUMBRES Ñ LASTARRIA, BOUTIQUE HOTEL

📍 Santiago, Chile

🏢 Glasstech, Chile





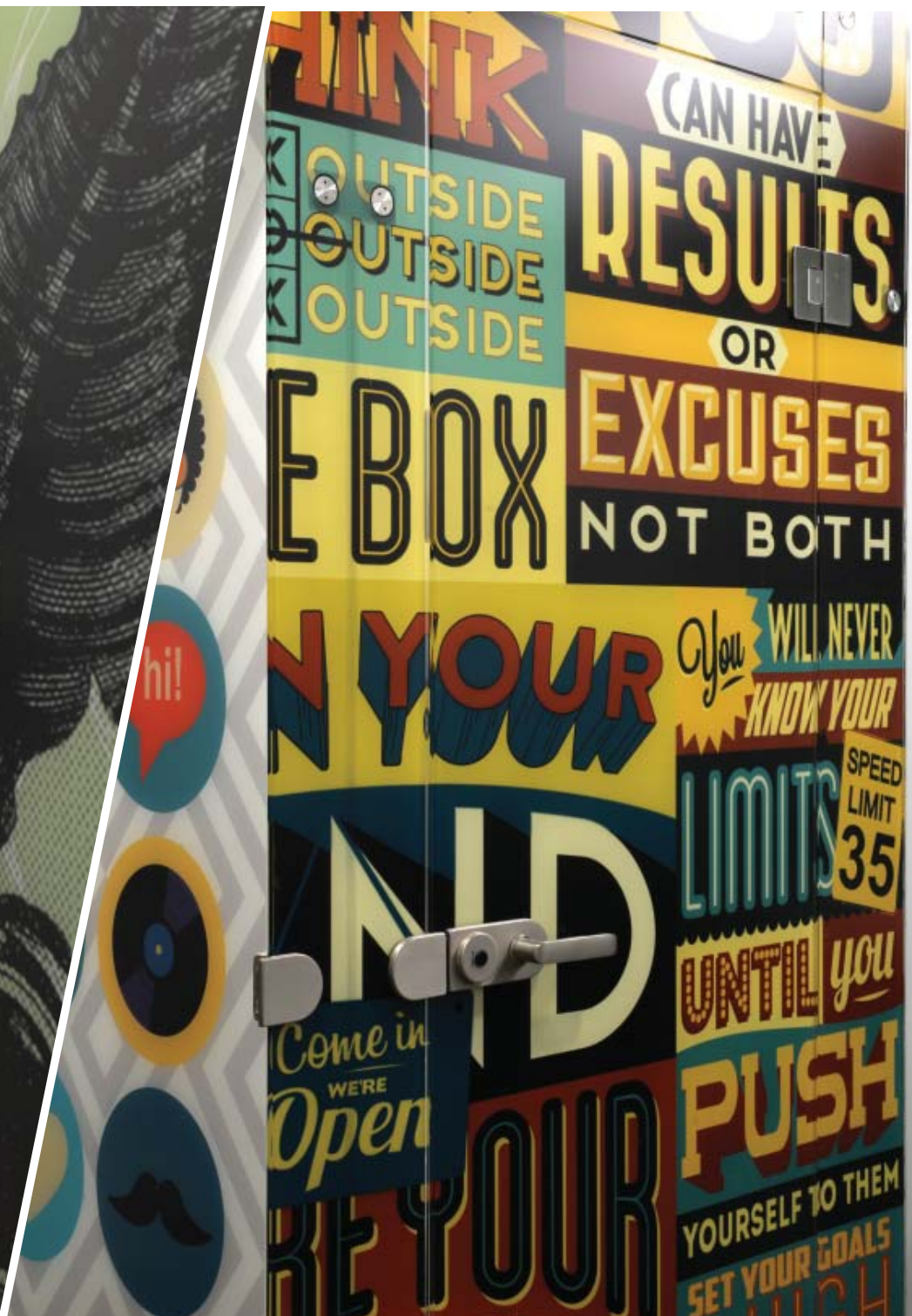
BATHROOMS & SHOWERS

BLURAN DESIGN

📍 Rishon-Lezion, Israel

🏠 AA Tempering





BATHROOMS & SHOWERS

SECRETS THE VINE

📍 Cancun, Mexico

🏢 PVA Vitro





KITCHENS

📍 Israel

🏠 Private Residences



📍 Finland

🏠 Private Residence



BLUSTRADES & BALCONIES

LE SEMAPHORE

📍 Nantes, France

🏗️ MACOCCO Vitrages



SJÆLØR BOULEVARD RESIDENTIAL BUILDING

📍 Copenhagen, Denmark

🏗 Glaseksperthen

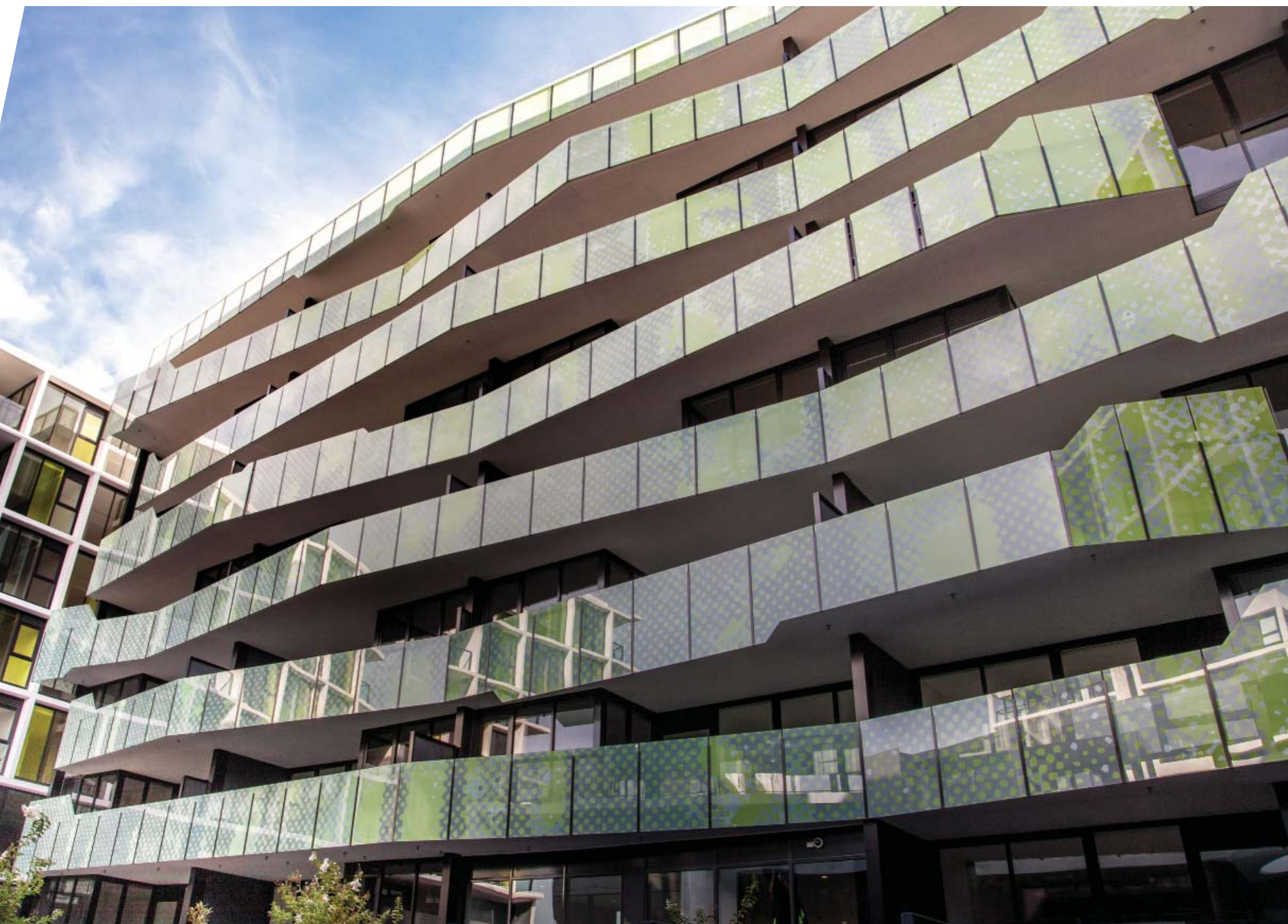


BLUSTRADES & BALCONIES GREEN SQUARE

📍 Melbourne, Australia

🏢 Cooling Brothers

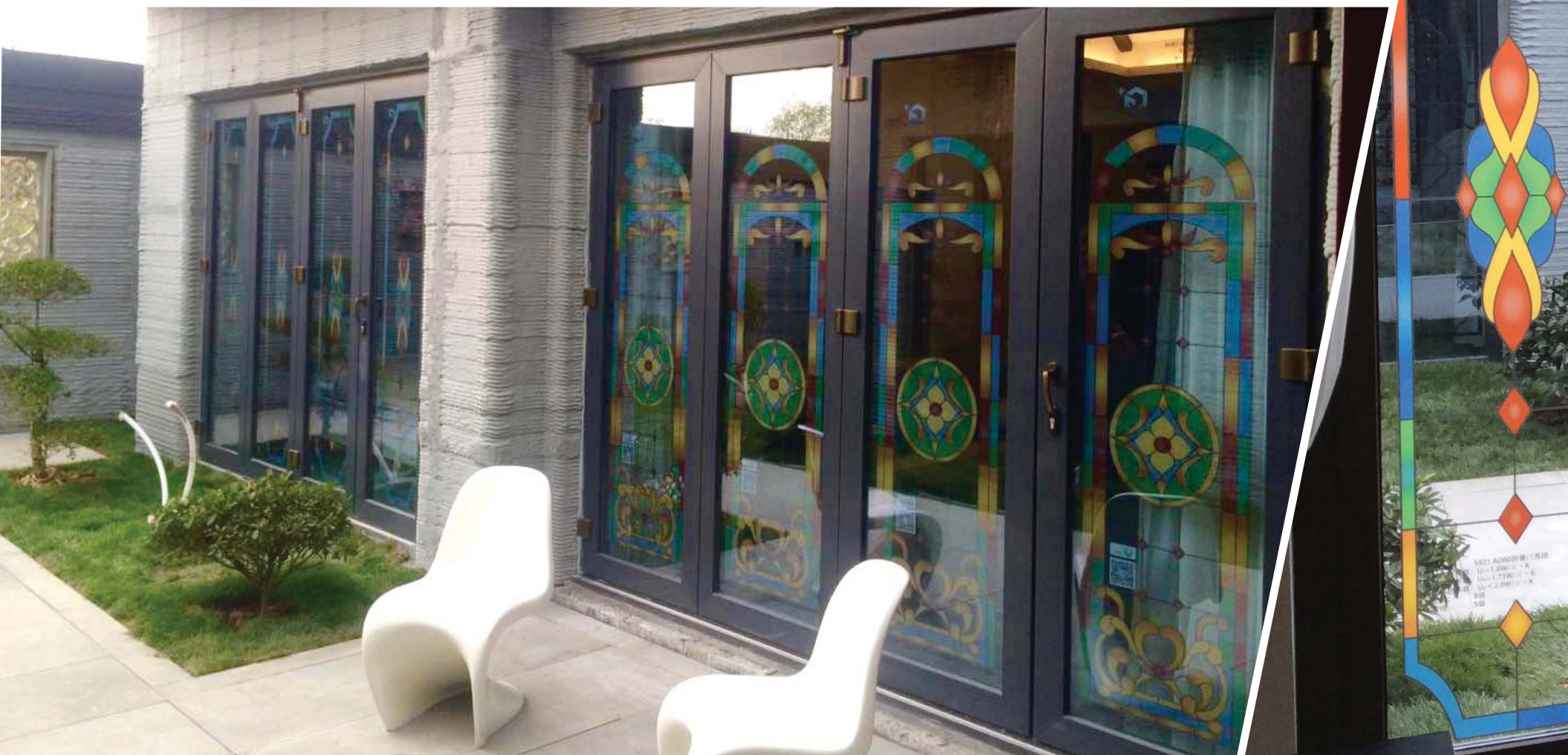




DOORS & WINDOWS

📍 Suzhou, China

🏢 Jingfeng Glass

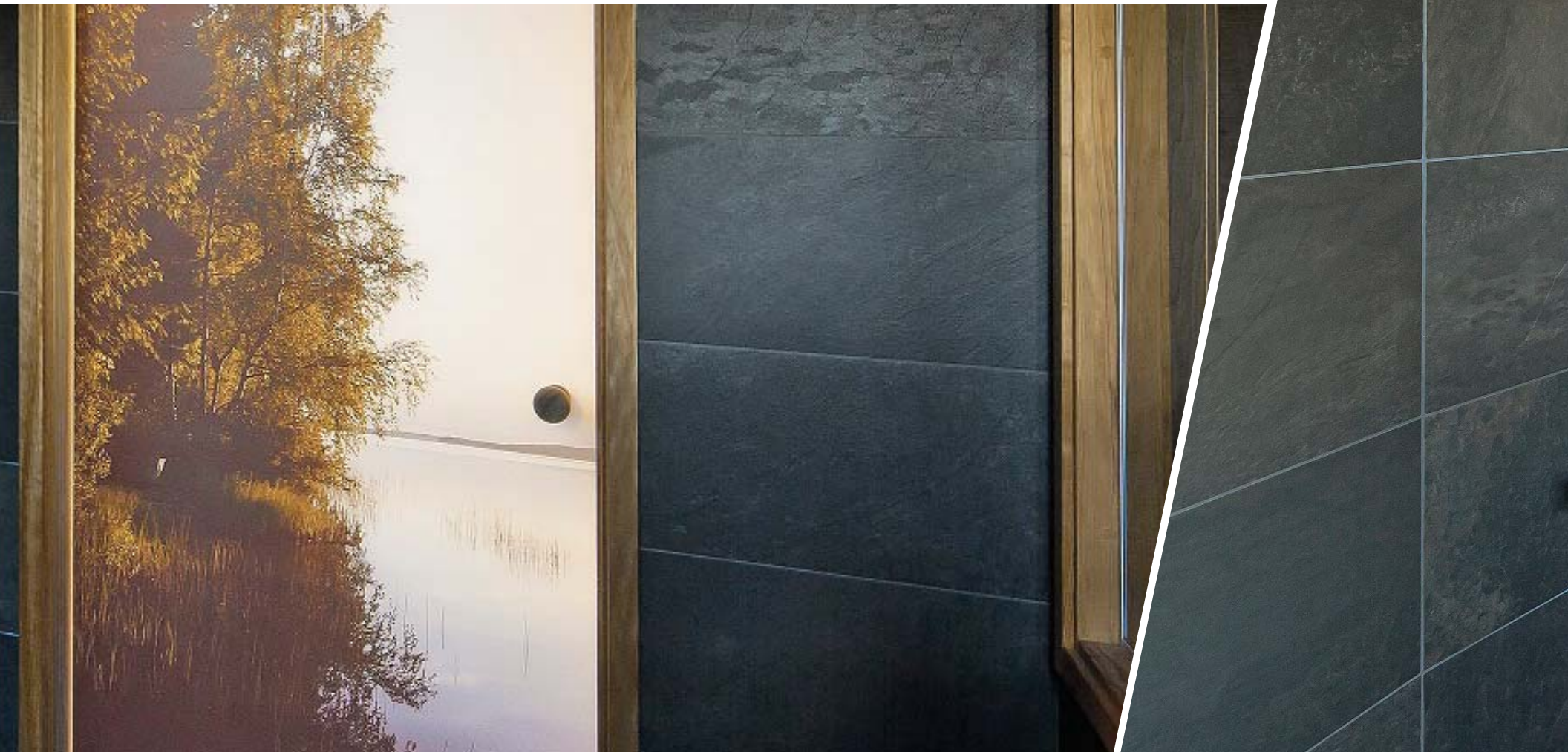




DOORS & WINDOWS

📍 Vihti, Finland

🏠 Rakla



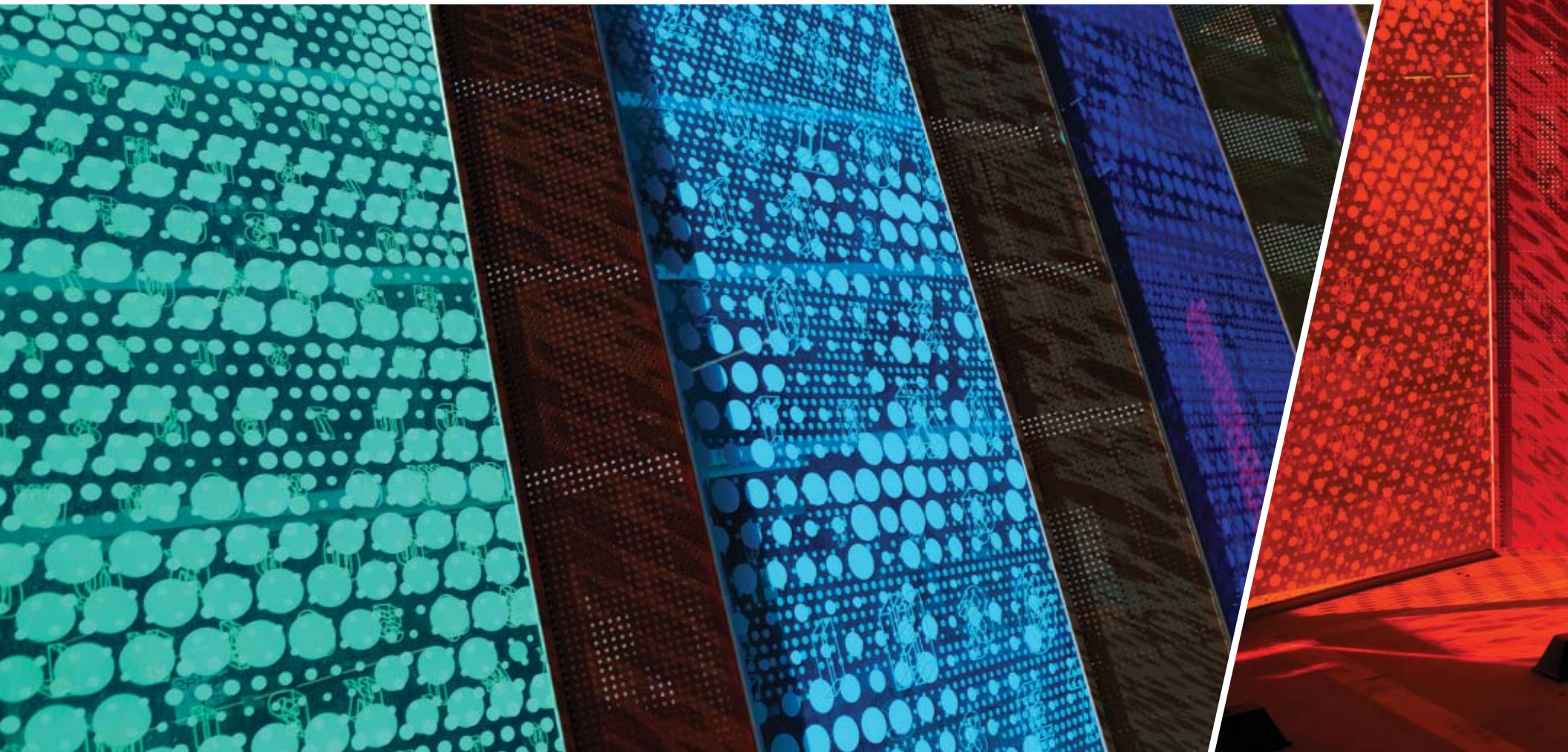


ART & CULTURAL

SPECTRUM PUBLIC ART

📍 Perth, Western Australia

🏗️ Cooling Brothers

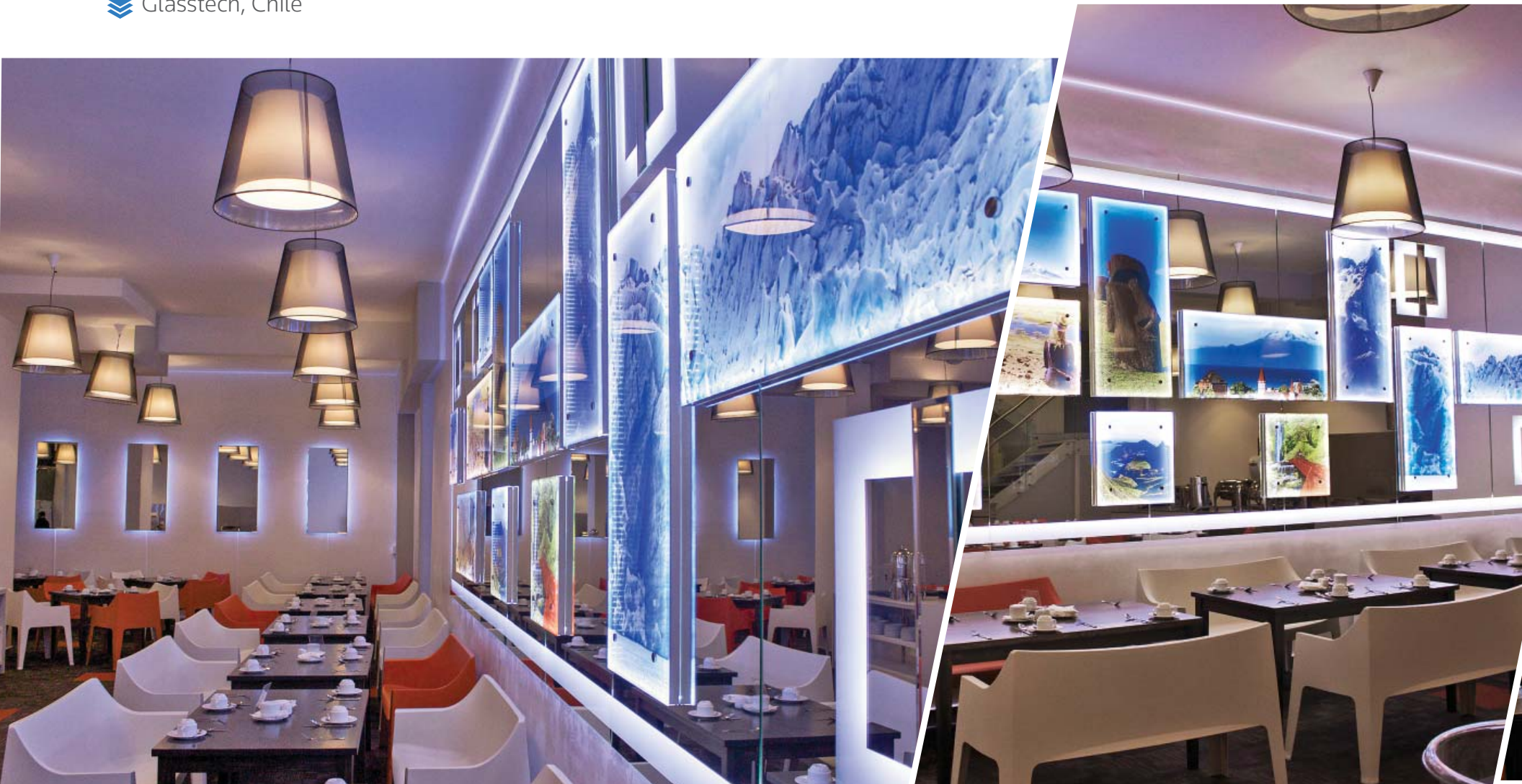




ART & CULTURAL HOTEL TORREMAYOR

📍 Santiago, Chile

🏗 Glasstech, Chile



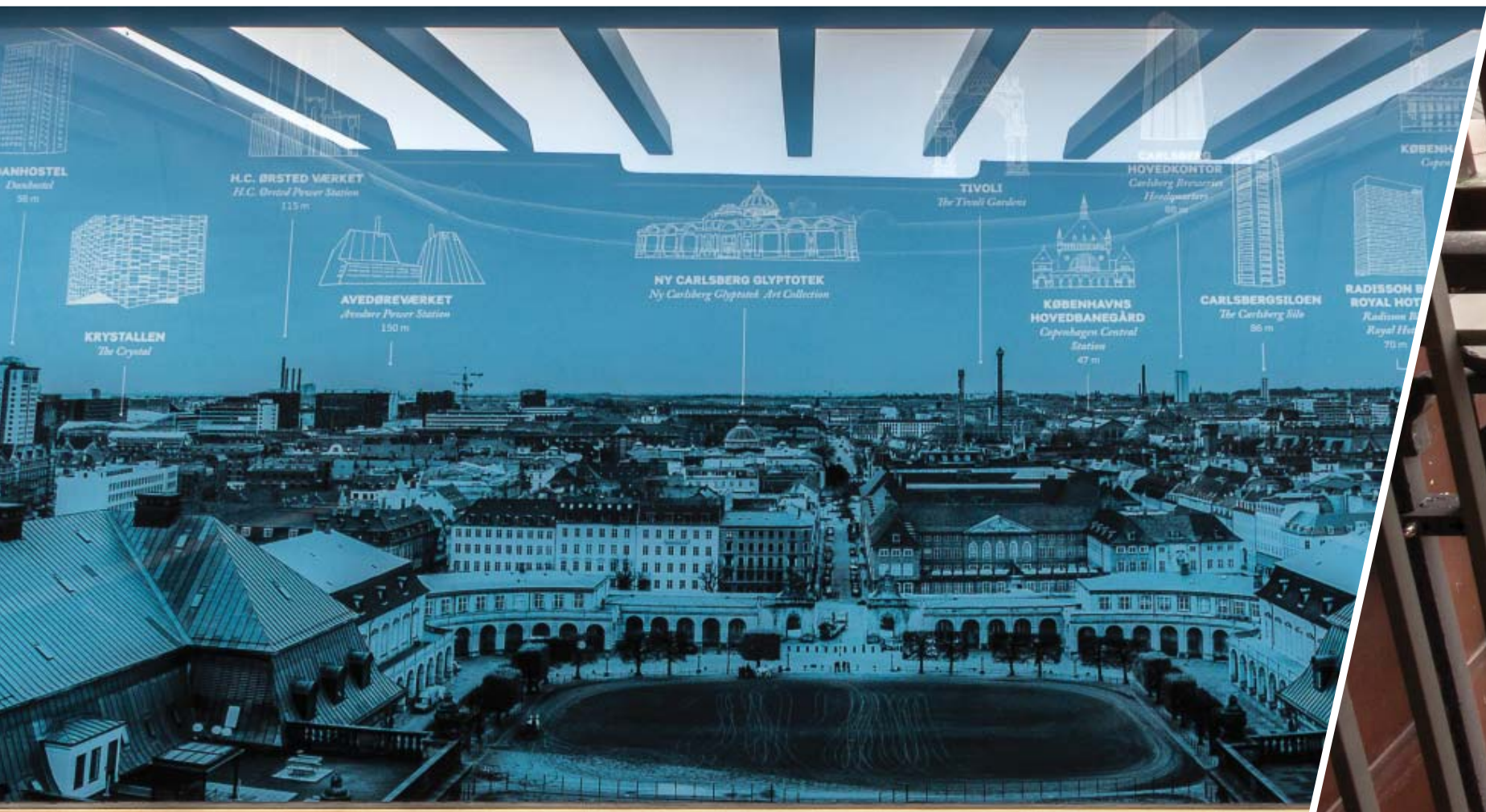


ART & CULTURAL

THE TOWER - CHRISTIANSBORG PALACE

📍 Copenhagen, Danmark

🏗 Glaseksporten



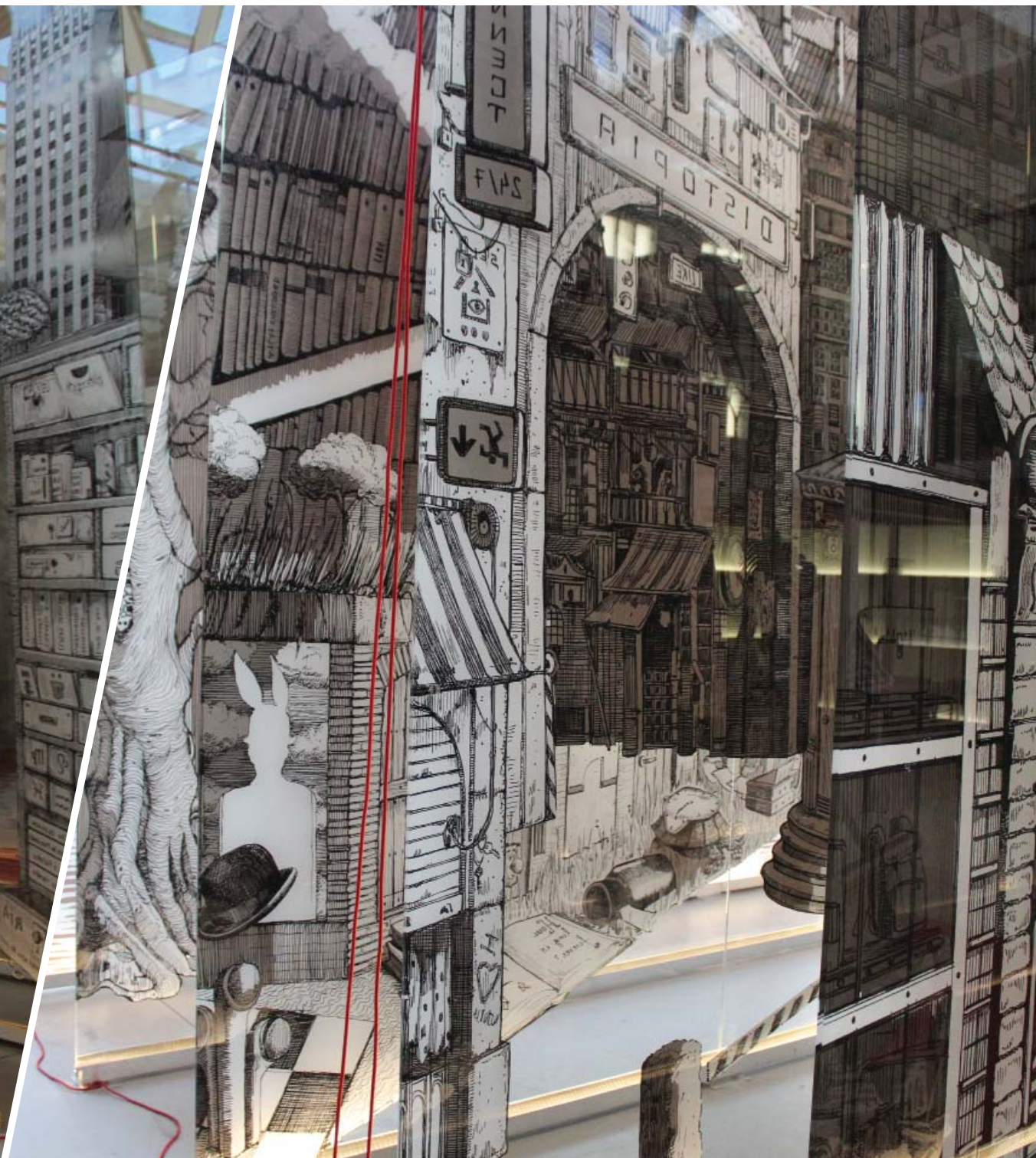


ART & CULTURAL VIDROMAX - SHOWROOM

📍 Matosinhos, Portugal

🏢 Vidromax





CANOPIES

ROMANO GUARDINI PLATZ

📍 Mainz, Germany

🏢 Thiele Glas



Space for everyone.

Helyet mindenkinek.

Tilaa kaikille.

Platz für alle.

Εύρος για όλους.

Εspacio para todos.

Παράθεση για όλους.

مساحة للجميع.

Herkes için yer var.

Space for everyone.

Spazio per tutti.

Μία θέση για όλους.

车位

STAINED GLASS

ST. MARY'S CHURCH

📍 Darwin, Australia

🏗️ Cooling Brothers





STAINED GLASS

STRASBOURG CATHEDRAL

📍 France

🏗 Saint-Gobain





SIGNAGE & MEMORIAL

MEMORIAL OF EMIL KOLBEN

📍 Czech Republic

🏢 IZOS





SIGNAGE & MEMORIAL

ANZAC MEMORIAL FOR OCEAN BEACH RSL

📍 Ocean Beach, Western Australia

🏠 Cooling Brothers





ABOUT DIP-TECH

Dip-Tech is the world's leading provider of digital in-glass printing solutions that combine the durability of ceramic inks with the versatility and quality of digital printing.

Dip-Tech helps architects express their artistic vision in: dividers, wall covers, bathrooms & showers, kitchens, balustrades & balconies, public art, canopies, windows, façades, stained glass, signage & memorials, and other glass elements and also meet the full range of functional requirements and sustainable architecture goals.



www.dip-tech.com | sales@dip-tech.com



©2016 Dip-Tech Digital Printing Technologies Ltd. All rights reserved. Dip-Tech, the Dip-Tech logo, and Dip-Tech Spectrum are trademarks or registered trademarks of Dip-Tech Digital Printing Technologies Ltd. and may be protected in certain jurisdictions. All other names are the property of their respective owners. All information is subject to change without notice.

