

Architects'™ Guide TO GLASS & METAL

Volume 33 • Issue 3 • Fall 2019

GLASS WITH A TWIST

Also Inside: Decorative Glass • Double-Skin Façades • Timber Curtainwall

A
KM:R
PUBLICATION

Subscribe free online at glass.com/subcenter

Photo: Technical Glass Products



Architects' Guide TO GLASS & METAL

Volume 33,
Issue 3,
Fall 2019

CONTENTS

14 **An Inside Job**
Several new projects across the United States exemplify recent trends in interior glazing, such as using glass for wall, staircase and flooring applications.

The Double Take
Double-skin façades are not common in the U.S., but their design can contribute to increased energy efficiency and occupant comfort through solar and thermal control.

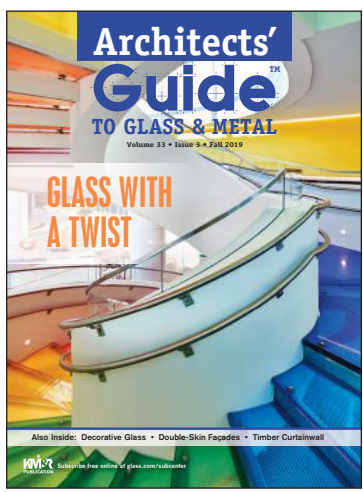
18



Photo: Connie Zhou

Columns and Departments

- 4 FROM THE EDITOR
- 6 FIELD NOTES
- 10 IN THE KNOW
- 24 NEW PRODUCT FOCUS
- 28 EDUCATION AND RESOURCES



On the Cover

Scottish Rite for Children Orthopedic and Sports Medicine Center features a colorful glass staircase fabricated by Standard Bent Glass using SentryGlas Expressions PVB interlayers and low-iron Starphire glass from Vitro Architectural Glass.

Photo: Garrett Rowland

See the article "An Inside Job" on p. 14 for more.



© 2019 by Key Media & Research. All rights reserved. The Architects' Guide to Glass and Metal is published three times per year by Key Media & Research, P.O. Box 569, Garrisonville, VA 22463; 540/720-5584; fax 540/720-5687. Advertising offices listed on page 4. Unsolicited manuscripts and other materials will not be returned. All contents are © 2019 by Key Media & Research. Neither publisher nor its representatives nor its subcontractors assume liability for errors in text, charts, advertisements, etc. and suggest appropriate companies be contacted before specifications or use of products advertised or included in editorial materials. Views and opinions expressed by authors are not necessarily those of the publisher. For permission to reprint, contact editorial office. No reproduction permitted without expressed written permission of the publisher. Printed in the U.S. Questions? Call 540/720-5584. Send subscription inquiries to Key Media & Research, P.O. Box 569, Garrisonville, VA 22463.

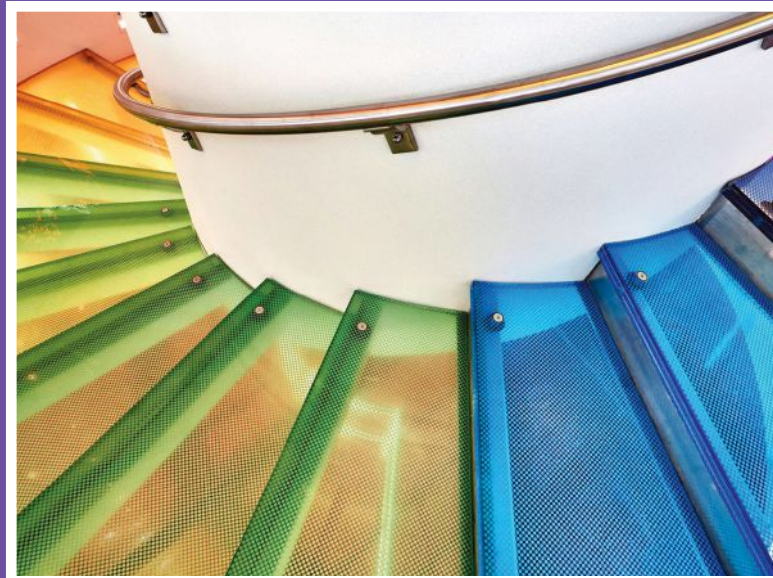
AN INSIDE JOB

Interior Glazing Provides Increased Transparency and Creativity

by Jordan Scott

g lass isn't a material used only on the exterior of a building. Glass can be seen throughout the interior of many modern buildings, offering increased transparency and cleanliness while simultaneously providing another medium for expression.

Several interior glazing trends have emerged, giving lobby walls, stairs and fire-rated floors a decorative flair.



Glass Stairs

Scottish Rite for Children Orthopedic and Sports Medicine Center—Frisco, Texas

The lobby staircase at the Scottish Rite for Children Orthopedic and Sports Medicine Center is colorful and winding. The translucent glass stairs provide pops of color that brighten the space.

Feature Walters developed a 12 metric ton steel structure for an unsupported, 720-degree spiral stair. The project team reached out to Standard Bent Glass (SBG), based in Butler, Pa., with whom it had worked previously. SBG provided the glass for the curved handrail and the individual stairs.

The railing includes 36 bent, tempered and laminated lites in the form of 20-inch tall parallelograms. Bobby Chestnut, sales manager of SBG's decorative division, said the curved glass was challenging to bend because at such a short height the glass tries to twist in the tempering oven.

For the 35 stairs and two landings, SBG fabricated glass in nine different colors using SentryGlas Expressions PVB interlayers from Kuraray and low-iron Starphire glass from Vitro Architectural Glass. Chestnut says that color matching was a bit of a challenge because the team was given Pantone colors to match.

"Matching a Pantone color is always tricky with glass because it's translucent versus Pantone color on paper," says Shawn Hickman, SBG decorative division production manager, who adds that the company has stock samples to help expedite the process.

The stairs include anti-slip treads created using Dip-Tech ink. Hickman says the chemical composition of the ink reacts to water, gaining more traction as water is applied to it.

"It's unlike anti-slip or slip-resistant float glass," he says. "When water is applied it performs better."

The project team required that no partial dots appear on the stairs; however, each of the stairs was pattern cut and did not have 90-degree corners. Not only did that make the pattern cuts and alignments more challenging but, according to Hickman, the SBG team had to ensure that the dot pattern aligned perfectly on the stairs.

HKS Architects was the architect for the project, which was completed in October 2018.